



VISAM

Egregio Cliente,

La presente pubblicazione riporta i dati elettromeccanici e dimensionali della nostra serie di vibratori elettrici per l'industria; nell'attesa dell'imminente Catalogo Generale viene fatto solo un breve cenno di altre esecuzioni disponibili, delle quali potrete trovare tutte le informazioni tecniche all'interno del nostro portale www.visam.it. Grazie

Alimentazione:	Da 42 a 700 V a 50 e 60 Hz Trifase Da 110 a 240 V a 50 e 60 Hz Monofase Idonei per un funzionamento mediante "inverter"
Esecuzioni:	2, 4, 6, 8, 10, 12 poli e speciali
Forza Centrifuga:	Da 100 a 20.000 Kg Regolazione da 0% al 100% in modo continuo (fornitura standard: masse regolate 80%)
Servizio:	Continuativo alla massima Forza Centrifuga (S1)
Protezione Meccanica:	IP 66.7
Classe Isolamento:	"F" standard • "H" a richiesta
Tropicalizzazione:	Standard
Lubrificazione:	"A Vita" fino alla grandezza 4 "Long Life" dalla grandezza 4.1 a crescere
Temperatura Ambiente di Lavoro:	Da -15° a +45° C
Protezione Termica:	Standard (termistore) dalla grandezza 10 a crescere A richiesta sino alla grandezza 9
Posizione di Installazione:	Tutte le posizioni
Finitura:	Verniciatura a polvere blu RAL 5010 / giallo RAL 1003
Collaudo:	Tutte le unità sono sottoposte ad un test dinamico di funzionamento (complete di masse)

Dear Customer,

The herewith publication gives all data of the industrial range of Electric Vibrators; the new General Catalogue will be soon available. Meanwhile we briefly mention about the other series in production and you are kindly requested to visit our web site www.visam.it. Thank you

Feeding:	From 42 up to 700 V at 50 & 60 Hz Three-phase From 110 up to 240 V at 50 & 60 Hz Single-phase Perfect performance under inverter control (VFD)
Executions:	2, 4, 6, 8, 10, 12 poles & specials
Centrifugal Force:	From 100 up to 20.000 Kg Continuous adjusting from 0% to 100% (standard supply: weights set at 80%)
Duty:	Heavy and continuous at maximum Centrifugal Force (S1)
Mechanical Protection:	IP 66.7
Insulation Class:	"F" standard • "H" on request
Tropicalization:	Standard.
Lubrication:	"For Life" up to size 4 "Long Life" from size 4.1 upwards
Ambient Temperature Range:	From -15° up to +45° C
Thermal Protection:	Standard (thermistor) from size 10 upwards Up to size 9 on request
Mounting Configurations:	Any position
Finish:	Powder coated blue RAL 5010 / yellow RAL 1003
Testing:	All units undergo a dynamic test-run (with unbalanced weights) before leaving the factory



CERTIFICATO DI SISTEMA QUALITÀ
QUALITY MANAGEMENT SYSTEM CERTIFICATE
UNI EN ISO 9001:2000
Nr 50 100 4961



Codice catalogo • Catalogue code: **CT-05-SPV-00**

Visam si riserva il diritto di modificare i dati senza obbligo di preavviso

Visam reserves the right to modify any data without notice

ALIMENTAZIONE STANDARD STANDARD FEEDING

Trifase • Three-phase

220 - 240/380 - 415 V, 50Hz

220 - 265/380 - 460 V, 60Hz

254 - 265/440 - 460 V, 60Hz

Monofase • Single-phase

220 - 240 V, 50Hz

110 - 120 V, 60Hz

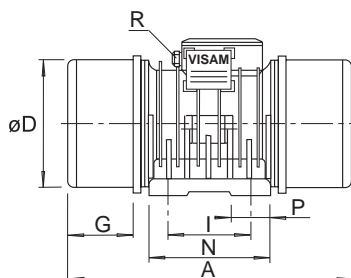


Fig.1 • Fig.1

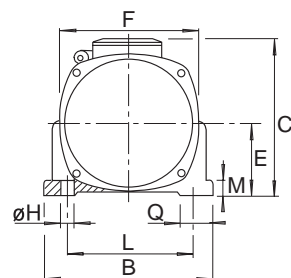


Fig.2 • Fig.2

3000 Rpm, 50 Hz
3600 Rpm, 60 Hz

2 poli • poles

trifase • three-phase

DATI GENERALI GENERAL DATA			DATI MECCANICI MECHANICAL DATA				DATI ELETTRICI ELECTRICAL DATA				DATI DIMENSIONALI OVERALL DIMENSIONS							DATI FISSAGGIO FIXING DATA								PESO WEIGHT			
CODICE CODE	MODELLO MODEL	GR. SZ.	MOM. STATICO STATIC MOM.		FORZA CENTR. CENTRIF. FORCE		POT. ASSORBITA INPUT POWER		CORRENTE CURRENT		FC	A	B	C	D	E	F	G	Nr	H	I	L	M	N	P	Q	R	(Kg)	
			(Kg*mm)		(Kg)		(KW)		(A)			(mm)							(mm)										
			50 Hz	60 Hz	50 Hz	60 Hz	50 Hz	60 Hz	50 Hz	60 Hz		50 Hz	60 Hz																50 Hz
SPV020A00B02	SPV 1.2 A	2.0	12,4	9,3	125	135	0,18	0,20	0,36	-	1	234	150	143	105	62	130	48	4	9	60-75	106	12	98	30	35	M16x1,5	5,1	4,9
SPV021A00B02	SPV 1.8 A	2.1	21,7	15,5	219	225	0,19	0,21	0,38	0,36	1	234	150	143	105	62	130	48	4	9	60-75	106	12	98	30	35	M16x1,5	5,5	5,2
SPV030A01B03	SPV 2.7 A	3.0	33,4	22,3	336	322	0,28	0,30	0,62	0,55	1	264	160	175	126	72	140	40	4	13	90	125	15	134	41	30	M16x1,5	8,5	8,0
SPV040A00B04	SPV 4.5 A	4.0	49,2	39,4	495	570	0,51	0,60	0,99	0,99	1	304	190	204	148	86	163	50	4	13	100	155	18	170	50	38	M20x1,5	15,0	14,5
SPV050A00B05	SPV 7.0 A	5.0	78,7	59,1	792	856	0,70	0,73	1,23	1,10	1	348	213	215	168	95	184	60	4	17	115	170	20	190	58	45	M20x1,5	21,0	20,0
SPV060A01B06	SPV 9.0 A	6.0	99,9	66,6	1.006	965	1,06	1,20	1,80	1,79	1	376	233	235	187	105	200	68	4	17	120	180	20	192	59	43	M20x1,5	26,0	25,0
SPV061A01B06	SPV 12.0 A	6.1	133,3	83,3	1.341	1.207	1,30	1,40	2,08	2,00	1	376	233	235	187	105	200	68	4	17	120	180	20	192	59	43	M20x1,5	28,0	26,5
SPV070A00B07	SPV 15.0 A	7.0	183,2	133,3	1.844	1.931	1,55	1,60	2,38	2,31	1	415	245	247	200	112	215	82	4	17	150	190	25	209	53	50	M20x1,5	45,0	43,0
SPV080A00B08	SPV 19.0 A	8.0	228,1	188,1	2.295	2.725	2,00	2,10	3,14	3,00	1	443	251	253	212	118	227	80	4	17	160	200	30	229	63	60	M20x1,5	53,0	51,5
SPV090A00B09	SPV 25.0 A	9.0	279,8	230,7	2.815	3.342	2,40	2,50	3,81	3,49	1	558	273	275	237	131	255	112	4	22	165	230	35	258	77	55	M20x1,5	73,0	71,0
SPV100A00B10	SPV 32.0 A	10.0	404,5	340,0	4.069	4.926	4,00	4,20	6,34	5,99	1	578	337	340	270	150	285	110	4	25	165	270	40	282	89	60	M25x1,5	107,0	105,5
SPV110A00B11	SPV 50.0 A	11.0	560,5	392,2	5.639	5.682	5,50	5,80	8,63	7,91	1	622	362	365	308	166	322	116	4	29	210	295	40	305	88	63	M25x1,5	153,0	151,0
SPV120A00B12	SPV 60.0 A	12.0	678,5	448,8	6.827	6.502	7,00	7,30	11,23	10,18	2	664	390	392	345	192	396	124	6	29	110	310	40	328	94	81	M25x1,5	179,0	175,0
SPV129A00B13	SPV 70.0 A	12.9	774,1	549,8	7.788	7.966	8,40	8,60	13,47	11,99	2	694	390	424	345	203	396	124	6	29	115	320	45	347	99	67	M25x1,5	225,0	222,0
SPV130A00B13	SPV 85.0 A	13.0	950,8	650,6	9.566	9.425	9,00	9,50	14,76	13,55	2	719	390	424	345	203	396	124	6	29	115	320	45	347	99	67	M25x1,5	247,0	243,0

3000 Rpm, 50 Hz
3600 Rpm, 60 Hz

2 poli • poles

50 Hz 60 Hz
120 V 110 V

monofase • single-phase

SPV020M00B02	SPV 1.2 AM	2.0	12,4	9,3	125	135	0,17	0,18	0,76	1,65	1	234	150	143	105	62	130	48	4	9	60-75	106	12	98	30	35	M16x1,5	5,5	5,2
SPV021M00B02	SPV 1.8 AM	2.1	21,7	15,5	219	225	0,18	0,19	0,82	1,69	1	234	150	143	105	62	130	48	4	9	60-75	106	12	98	30	35	M16x1,5	5,5	5,2
SPV030M01B03	SPV 2.7 AM	3.0	33,4	22,3	336	322	0,30	0,33	1,36	3,02	1	264	160	175	126	72	140	40	4	13	90	125	15	134	41	30	M16x1,5	8,5	8,0
SPV040M00B04	SPV 4.5 AM	4.0	49,2	39,4	495	570	0,50	0,75	3,11	7,76	1	304	190	204	148	86	163	50	4	13	100	155	18	170	50	38	M20x1,5	15,0	14,5
SPV050M00B05	SPV 7.0 AM	5.0	78,7	59,1	792	856	0,65	1,00	5,65	9,56	1	348	213	215	168	95	184	60	4	17	115	170	20	190	58	45	M20x1,5	19,5	18,5
SPV060M01B06	SPV 9.0 AM	6.0	99,9	66,6	1.006	965	1,00	0,90	4,73	8,07	1	376	233	235	187	105	200	68	4	17	120	180	20	192	59	43	M20x1,5	26,0	25,0
SPV061M01B06	SPV 12.0 AM	6.1	133,3	83,3	1.341	1.207	1,25	1,25	5,91	10,98	1	376	233	235	187	105	200	68	4	17	120	180	20	192	59	43	M20x1,5	28,0	26,5

ALIMENTAZIONE STANDARD STANDARD FEEDING

Trifase • Three-phase

220 - 240/380 - 415 V, 50Hz

220 - 265/380 - 460 V, 60Hz

254 - 265/440 - 460 V, 60Hz

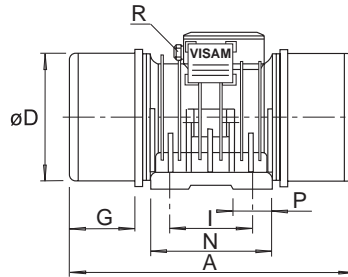


Fig.1 • Fig.1

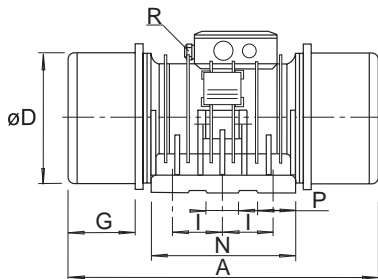
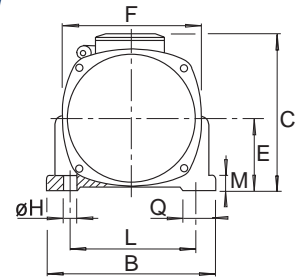
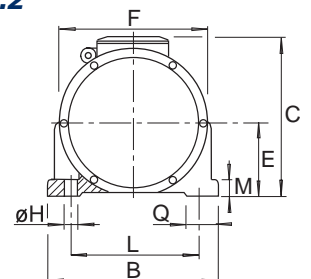


Fig.2 • Fig.2



1500 Rpm, 50 Hz
1800 Rpm, 60 Hz

4 poli • poles

DATI GENERALI GENERAL DATA			DATI MECCANICI MECHANICAL DATA				DATI ELETTRICI ELECTRICAL DATA				DATI DIMENSIONALI OVERALL DIMENSIONS							DATI FISSAGGIO FIXING DATA							PESO WEIGHT				
CODICE CODE	MODELLO MODEL	GR. SZ.	MOM. STATICO STATIC MOM.		FORZA CENTR. CENTRIF. FORCE		POT. ASSORBITA INPUT POWER		CORRENTE CURRENT		FIG.	A	B	C	D	E	F	G	Nr	H	I	L	M	N	P	Q	R	(Kg)	
			(Kg*mm)	(Kg)	(KW)	(A)	(mm)							(mm)							50 Hz	60 Hz							
			50 Hz	60 Hz	50 Hz	60 Hz	50 Hz	60 Hz	50 Hz	60 Hz		50 Hz	60 Hz																
SPV020B00B02	SPV 0.5 B	2.0	21,7	18,6	55	67	0,09	0,10	0,26	4,00	1	322	150	143	105	62	130	62	4	9	60-75	106	12	98	30	35	M16x1,5	5,3	5,1
SPV021B00B02	SPV 0.8 B	2.1	34,1	24,8	86	90	0,10	0,15	0,26	4,00	1	322	150	143	105	62	130	62	4	9	60-75	106	12	98	30	35	M16x1,5	6,0	5,5
SPV030B01B03	SPV 2.2 B	3.0	105,7	72,3	266	262	0,20	0,22	0,48	2,50	1	334	160	175	126	72	140	68	4	13	90	125	15	134	41	30	M16x1,5	10,5	9,5
SPV040B00B04	SPV 3.8 B	4.0	173,9	120,1	437	435	0,35	0,42	0,72	3,40	1	380	190	204	148	86	163	88	4	13	100	155	18	170	50	38	M20x1,5	20,0	18,0
SPV041B00B04	SPV 5.1 B	4.1	237,1	173,9	596	630	0,43	0,50	0,81	3,60	1	416	190	204	148	86	163	106	4	13	100	155	18	170	50	38	M20x1,5	23,0	20,5
SPV050B00B05	SPV 6.7 B	5.0	298,1	198,7	750	720	0,55	0,63	0,95	2,60	1	400	213	215	168	95	184	86	4	17	115	170	20	190	58	45	M20x1,5	26,5	23,5
SPV060B01B06	SPV 10.0 B	6.0	448,6	308,0	1.128	1.116	1,00	1,10	1,66	2,80	1	440	233	235	187	105	200	100	4	17	120	180	20	192	59	43	M20x1,5	36,5	32,5
SPV070B00B07	SPV 15.0 B	7.0	673,0	498,2	1.693	1.805	1,20	1,35	2,17	3,50	1	473	245	247	200	112	215	110	4	17	150	190	25	209	53	50	M20x1,5	56,5	53,0
SPV080B00B08	SPV 20.0 B	8.0	902,2	591,1	2.269	2.141	1,40	1,55	2,38	4,10	1	519	251	253	212	118	227	118	4	17	160	200	30	229	63	60	M20x1,5	68,0	60,0
SPV090B00B09	SPV 25.5 B	9.0	1.159,3	858,2	2.916	3.108	1,90	2,00	3,52	5,10	1	558	273	275	237	131	255	112	4	22	165	230	35	258	77	55	M20x1,5	90,0	83,0
SPV100B00B10	SPV 35.0 B	10.0	1.570,1	1.162,2	3.949	4.210	2,40	2,60	4,95	5,00	1	578	337	340	270	150	285	110	4	25	165	270	40	282	89	60	M25x1,5	126,5	118,5
SPV110B00B11	SPV 47.5 B	11.0	2.102,6	1.556,5	5.288	5.637	3,50	3,80	5,81	5,20	1	622	362	365	308	166	322	116	4	29	210	295	40	305	88	63	M25x1,5	166,0	161,0
SPV120B00B12	SPV 55.0 B	12.0	2.300,8	1.729,1	5.787	6.263	4,50	5,00	7,38	4,30	2	664	390	392	345	192	396	124	6	29	110	310	40	328	94	81	M25x1,5	198,0	192,0
SPV129B00B13	SPV 63.0 B	12.9	2.797,1	1.962,2	7.035	7.107	6,10	6,25	10,01	3,80	2	694	390	424	345	203	396	124	6	29	115	320	45	347	99	67	M25x1,5	242,0	229,0
SPV130B00B13	SPV 77.0 B	13.0	3.382,1	2.363,6	8.507	8.561	7,10	7,30	11,92	4,00	2	719	390	424	345	203	396	124	6	29	115	320	45	347	99	67	M25x1,5	265,0	251,0
SPV140B00B14	SPV 83.0 B	14.0	3.810,4	2.673,0	9.584	9.681	7,80	8,40	12,37	4,20	2	732	455	455	410	225	460	118	6	32	130	380	50	380	118	90	M25x1,5	314,0	298,0
SPV141B01B14	SPV 105.0 B	14.1	4.920,8	3.578,8	12.377	12.962	10,70	11,10	17,55	4,80	2	738	455	455	410	225	460	118	6	32	130	380	50	380	118	90	M25x1,5	332,0	314,0

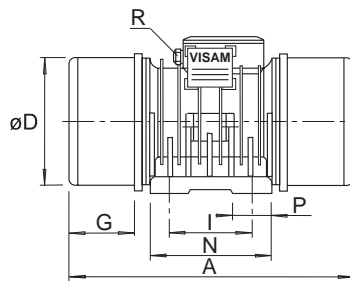
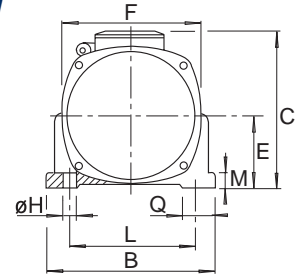


Fig.1 • Fig.1



ALIMENTAZIONE STANDARD STANDARD FEEDING

Trifase • Three-phase

220 - 240/380 - 415 V, 50Hz

220 - 265/380 - 460 V, 60Hz

254 - 265/440 - 460 V, 60Hz

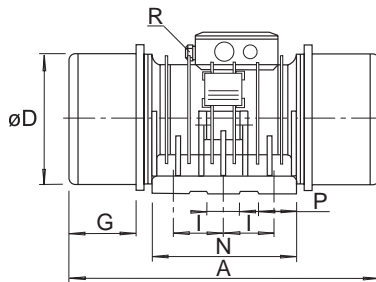


Fig.2 • Fig.2

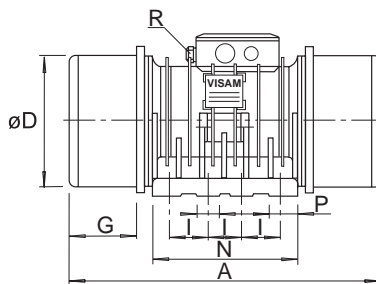
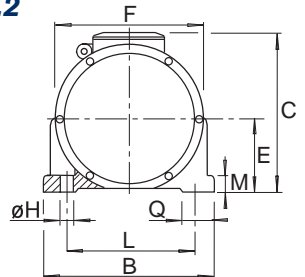
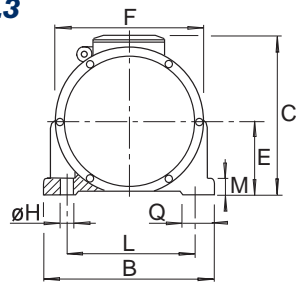


Fig.3 • Fig.3



1000 Rpm, 50 Hz
1200 Rpm, 60 Hz

6 poli • poles

DATI GENERALI GENERAL DATA			DATI MECCANICI MECHANICAL DATA				DATI ELETTRICI ELECTRICAL DATA				DATI DIMENSIONALI OVERALL DIMENSIONS							DATI FISSAGGIO FIXING DATA						PESO WEIGHT					
CODICE CODE	MODELLO MODEL	GR. SZ.	MOM. STATICO STATIC MOM.		FORZA CENTR. CENTRIF. FORCE		POT. ASSORBITA INPUT POWER		CORRENTE CURRENT		FIG.	A	B	C	D	E	F	G	Nr	H	I	L	M	N	P	Q	R	(Kg)	
			(Kg*mm)	(Kg)	(KW)	(A)	(mm)							(mm)						50 Hz	60 Hz								
			50 Hz	60 Hz	50 Hz	60 Hz	50 Hz	60 Hz	50 Hz	60 Hz		50 Hz	60 Hz																
SPV030C01B03	SPV 1.1 C	3.0	105,7	105,7	118	170	0,16	0,17	0,38	0,33	1	334	160	175	126	72	140	85	4	13	90	125	15	134	41	30	M16x1,5	10,5	10,5
SPV031C00B03	SPV 1.4 C	3.1	145,6	145,6	163	234	0,18	0,20	0,41	0,38	1	358	160	175	126	72	140	85	4	13	90	125	15	134	41	30	M16x1,5	14,0	13,5
SPV040C00B04	SPV 1.7 C	4.0	173,9	173,9	194	280	0,28	0,35	0,70	0,81	1	380	190	204	148	86	163	88	4	13	100	155	18	170	50	38	M20x1,5	20,0	20,0
SPV041C00B04	SPV 2.2 C	4.1	237,1	237,1	265	382	0,30	0,38	0,73	0,80	1	416	190	204	148	86	163	106	4	13	100	155	18	170	50	38	M20x1,5	22,5	22,5
SPV050C00B05	SPV 3.8 C	5.0	397,4	298,1	444	480	0,45	0,50	1,06	1,03	1	438	213	215	168	95	184	105	4	17	115	170	20	190	58	45	M20x1,5	29,0	26,0
SPV060C01B06	SPV 5.0 C	6.0	515,6	448,6	576	722	0,80	0,90	1,52	1,53	1	464	233	235	187	105	200	112	4	17	120	180	20	192	59	43	M20x1,5	39,5	37,5
SPV070C00B07	SPV 8.0 C	7.0	847,9	673,0	948	1.083	0,90	1,00	1,78	1,67	1	509	245	247	200	112	215	128	4	17	150	190	25	209	53	50	M20x1,5	60,0	55,5
SPV080C01B08	SPV 12.0 C	8.0	1.213,3	902,2	1.356	1.452	1,00	0,90	2,06	1,55	1	583	251	253	212	118	227	150	4	17	160	200	30	229	63	60	M20x1,5	77,0	69,0
SPV090C00B09	SPV 17.0 C	9.0	1.761,6	1.159,3	1.969	1.866	1,50	1,70	2,78	2,92	1	630	273	275	237	131	255	148	4	22	165	230	35	258	77	55	M20x1,5	105,5	92,0
SPV100C01B10	SPV 27.0 C	10.0	2.740,2	2.126,4	3.063	3.423	2,27	2,35	4,96	4,54	1	674	337	340	270	150	285	158	4	25	165	270	40	282	89	60	M25x1,5	151,0	138,0
SPV110C01B11	SPV 35.5 C	11.0	3.551,1	2.604,2	3.970	4.192	2,70	3,00	5,82	5,54	1	706	362	365	308	166	322	158	4	29	210	295	40	305	88	63	M25x1,5	189,0	173,0
SPV111C00B11	SPV 41.5 C	11.1	4.227,5	2.942,4	4.726	4.736	3,30	3,50	6,80	6,19	1	706	362	365	308	166	322	158	4	29	210	295	40	305	88	63	M25x1,5	206,0	185,0
SPV120C00B12	SPV 50.0 C	12.0	5.117,8	3.682,9	5.721	5.928	4,00	4,20	7,13	6,76	2	744	390	392	345	192	396	164	6	29	110	310	40	328	94	81	M25x1,5	236,0	216,0
SPV129C00B13	SPV 61.0 C	12.9	6.048,3	4.143,3	6.761	6.670	5,30	6,20	9,44	10,11	2	774	390	424	345	203	396	164	6	29	115	320	45	347	99	67	M25x1,5	294,0	266,0
SPV130C00B13	SPV 80.0 C	13.0	7.906,3	5.539,1	8.838	8.916	7,60	8,20	13,06	13,03	2	879	390	424	345	203	396	204	6	29	115	320	45	347	99	67	M25x1,5	340,0	305,0
SPV140C01B14	SPV 90.5 C	14.0	9.134,5	6.257,5	10.211	10.073	8,00	8,60	13,43	13,84	2	906	455	455	410	225	460	205	6	32	130	380	50	380	118	90	M25x1,5	385,0	348,0
SPV141C01B14	SPV 114.0 C	14.1	11.415,6	7.532,8	12.761	12.126	9,80	10,80	16,64	16,94	2	982	455	455	410	225	460	240	6	32	130	380	50	380	118	90	M25x1,5	420,0	370,0
SPV142C01B14	SPV 122.0 C	14.2	12.192,2	8.309,3	13.629	13.376	10,20	11,00	17,12	17,48	2	982	455	455	410	225	460	240	6	32	130	380	50	380	118	90	M25x1,5	432,0	383,0
SPV150C00B15	SPV 140.0 C	15.0	13.772,1	9.751,0	15.395	15.696	11,50	12,50	19,76	18,46	2	920	490	495	450	245	500	190	6	34	155	400	50	455	143	90	M32x1,5	530,0	485,0
SPV151C00B15	SPV 160.0 C	15.1	15.828,7	10.787,7	17.694	17.365	13,80	15,00	24,00	23,53	2	1040	490	495	450	245	500	215	6	34	155	400	50	455	143	90	M32x1,5	580,0	522,0
SPV171C00B17	SPV 220.0 C	17.1	20.408,5	12.067,7	22.814	19.426	19,00	20,50	32,26	31,38	3	1120	620	610	548	300	600	230	8	45	140	520	55	600	100	115	M40x1,5	905,0	865,0

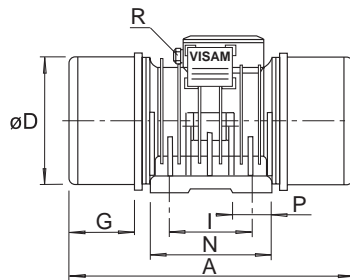


Fig.1 • Fig.1

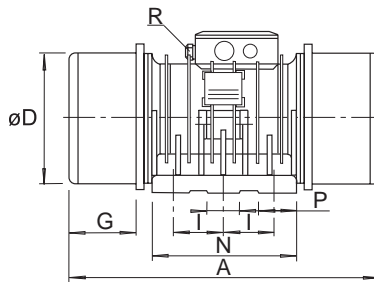
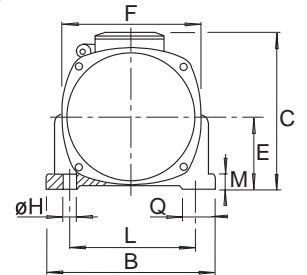


Fig.2 • Fig.2

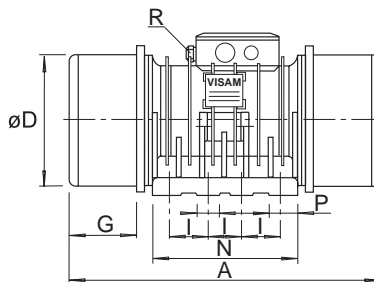
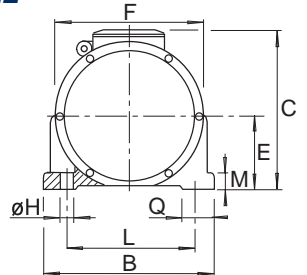
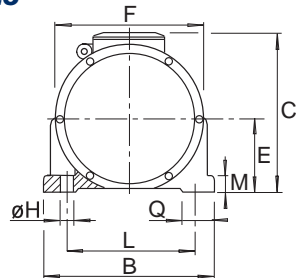


Fig.3 • Fig.3



ALIMENTAZIONE STANDARD STANDARD FEEDING

Trifase • Three-phase

220 - 240/380 - 415 V, 50Hz

220 - 265/380 - 460 V, 60Hz

254 - 265/440 - 460 V, 50Hz

750 Rpm, 50 Hz
900 Rpm, 60 Hz

8 poli • poles

DATI GENERALI GENERAL DATA			DATI MECCANICI MECHANICAL DATA				DATI ELETTRICI ELECTRICAL DATA				DATI DIMENSIONALI OVERALL DIMENSIONS							DATI FISSAGGIO FIXING DATA							PESO WEIGHT				
CODICE CODE	MODELLO MODEL	GR. SZ.	MOM. STATICO STATIC MOM.		FORZA CENTR. CENTRIF. FORCE		POT. ASSORBITA INPUT POWER		CORRENTE CURRENT		FIG.	A	B	C	D	E	F	G	Nr	H	I	L	M	N	P	Q	R	(Kg)	
			(Kg*mm)		(Kg)		(KW)		(A)			(mm)							(mm)										
			50 Hz	60 Hz	50 Hz	60 Hz	50 Hz	60 Hz	50 Hz	60 Hz		50 Hz	60 Hz																
SPV041D00B04	SPV 1.3 D	4.1	237,1	237,1	149	215	0,28	0,32	0,90	0,80	1	416	190	204	148	86	163	106	4	13	100	155	18	170	50	38	M20x1,5	22,5	22,5
SPV050D00B05	SPV 2.1 D	5.0	397,4	397,4	250	360	0,40	0,44	0,95	1,10	1	438	213	215	168	95	184	105	4	17	115	170	20	190	58	45	M20x1,5	29,0	29,0
SPV060D01B06	SPV 2.8 D	6.0	515,6	515,6	324	467	0,55	0,72	1,47	1,74	1	464	233	235	187	105	200	112	4	17	120	180	20	192	59	43	M20x1,5	39,5	39,5
SPV070D00B07	SPV 4.5 D	7.0	847,9	847,9	533	768	0,60	0,65	1,67	1,63	1	509	245	247	200	112	215	128	4	17	150	190	25	209	53	50	M20x1,5	60,0	60,0
SPV080D01B08	SPV 7.0 D	8.0	1.213,3	1.213,3	763	1.099	0,55	0,65	1,42	1,60	1	583	251	253	212	118	227	150	4	17	160	200	30	229	63	60	M20x1,5	77,0	77,0
SPV090D00B09	SPV 10.0 D	9.0	1.761,6	1.761,6	1.108	1.595	1,10	1,25	2,27	2,31	1	630	273	275	237	131	255	148	4	22	165	230	35	258	77	55	M20x1,5	105,5	105,5
SPV100D01B10	SPV 15.5 D	10.0	2.740,2	2.740,2	1.723	2.481	1,90	2,00	4,57	4,33	1	674	337	340	270	150	285	158	4	25	165	270	40	282	89	60	M25x1,5	151,0	151,0
SPV110D01B11	SPV 20.0 D	11.0	3.551,1	3.551,1	2.233	3.215	2,20	2,75	5,04	5,85	1	706	362	365	308	166	322	158	4	29	210	295	40	305	88	63	M25x1,5	189,0	189,0
SPV111D01B11	SPV 23.5 D	11.1	4.227,5	4.227,5	2.658	3.828	3,00	3,30	6,66	6,90	1	706	362	365	308	166	322	158	4	29	210	295	40	305	88	63	M25x1,5	206,0	206,0
SPV120D00B12	SPV 28.0 D	12.0	6.074,4	5.117,8	3.820	4.634	3,60	4,00	7,99	7,97	2	824	390	392	345	192	396	204	6	29	110	310	40	328	94	81	M25x1,5	257,0	243,0
SPV129D00B13	SPV 42.5 D	12.9	7.477,1	6.048,3	4.702	5.477	5,20	5,80	10,01	10,25	2	854	390	424	345	203	396	204	6	29	115	320	45	347	99	67	M25x1,5	300,0	280,0
SPV130D00B13	SPV 56.0 D	13.0	9.800,0	7.906,3	6.162	7.159	6,20	7,20	11,93	11,59	2	959	390	424	345	203	396	244	6	29	115	320	45	347	99	67	M25x1,5	373,0	345,0
SPV140D00B14	SPV 66.5 D	14.0	12.011,4	9.134,5	7.553	8.271	7,00	8,00	13,12	12,55	2	976	455	455	410	225	460	240	6	32	130	380	50	380	118	90	M25x1,5	430,0	392,0
SPV141D01B14	SPV 78.5 D	14.1	13.745,4	12.192,2	8.643	11.040	7,30	8,50	13,86	13,34	2	982	455	455	410	225	460	240	6	32	130	380	50	380	118	90	M25x1,5	450,0	430,0
SPV150D01B15	SPV 100.0 D	15.0	17.793,1	13.772,1	11.188	12.470	10,00	10,80	20,92	19,93	2	1010	490	495	450	245	500	235	6	34	155	400	50	455	143	90	M32x1,5	585,0	560,0
SPV151D00B15	SPV 124.0 D	15.1	21.877,9	17.845,1	13.757	16.158	11,00	12,00	22,68	22,82	2	1140	490	495	450	245	500	265	6	34	155	400	50	455	143	90	M32x1,5	665,0	640,0
SPV171C00B17	SPV 200.0 D	17.1	29.636,7	24.312,8	18.636	22.014	13,60	14,80	26,90	28,10	3	1120	620	610	548	300	600	230	8	45	140	520	55	600	100	115	M40x1,5	980,0	945,0

SPV



Vibratori 10 e 12 poli.
10 and 12 poles Vibrators.

SPC



Vibratori ad attacco rapido.
Quick release system Vibrators.

AMV



Mini Vibratori.
Mini-Vibrators.

**HFV
HFC**



Vibratori ad alta frequenza.
High frequency Vibrators.

**VFV
VFC**



Vibratori a frequenza variabile.
Variable frequency Vibrators.

**Mod
VIB**



Sistema modulare a variazione di frequenza.
Variable frequency modular system.

SPEx



Vibratori Atex.
Atex Vibrators.



DCV



Vibratori a corrente continua.
Direct current Vibrators.

.....



Vibratori speciali.
Special Vibrators.



VISAM s.r.l.

Via dell'Industria, 54 - 41100 MODENA - ITALIA

Tel. +39 059 9781295 - Fax +39 059 9781646

E-mail: info@visam.it

